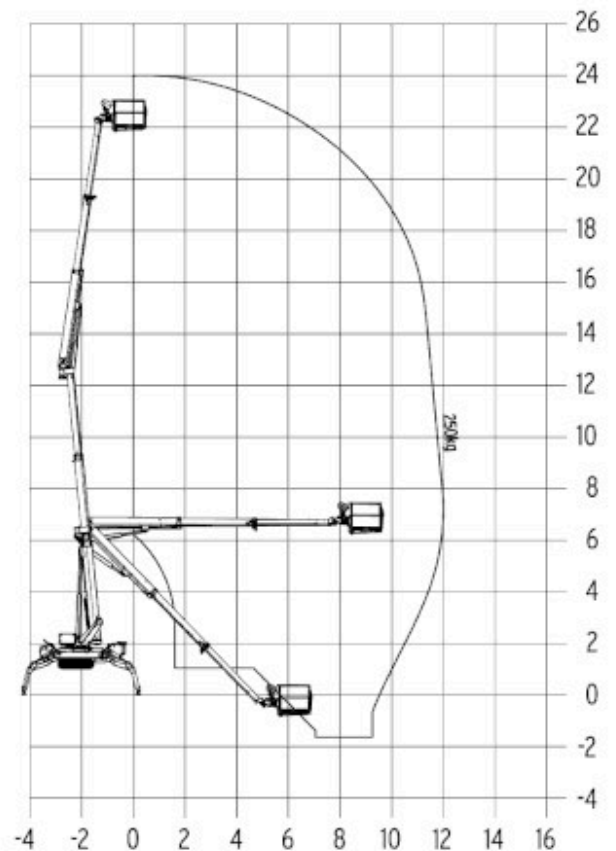
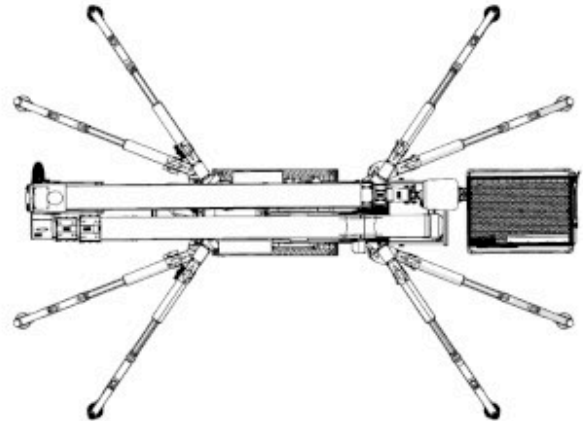
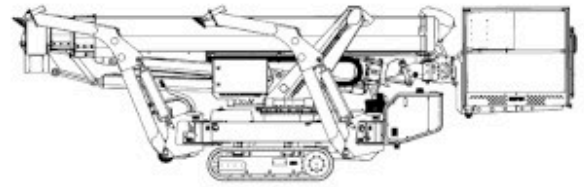


GSA 24 G

Tracked spider platform 24m

Max. Working height	24,16 m
Max. Basket load / Lifting load	250 kg
Drive type	Hybrid
Max. lateral reach	12,45 m
Overall dimensions LxWxH	6.39 x 0.99 x 1.97 m
Transport position length	6,39 m
Construction width	0,99 m
Transport position height	1,97 m
Platform dimensions WxD	1.36 x 0.67 m m
Max. Platform height	22,16 m
Swing axle	no
Basket arm, rotation angle	no / -
Dead weight	3330 kg
Ground clearance	0,35 m
Four-wheel drive	no
Supports	yes
Support pressure max.	23.7 kN
Support on both sides LxW	4.64 x 4.74 m
Support one-sided BxL	3.80 x 6.50 m
Support narrow WxL	2.74 x 6.50 m
Swivel range	450°
Tractieaandrijving	yes, white rubber chain
Rotatable basket	yes
Indoor use only	no
Non-Marking	yes
Special features	Height-adjustable chassis for driving on slopes, optional electric or diesel drive, can be used for material handling up to 300 kg, optional glass vacuum cleaner available



Technical specifications, prices and images are subject to change.

