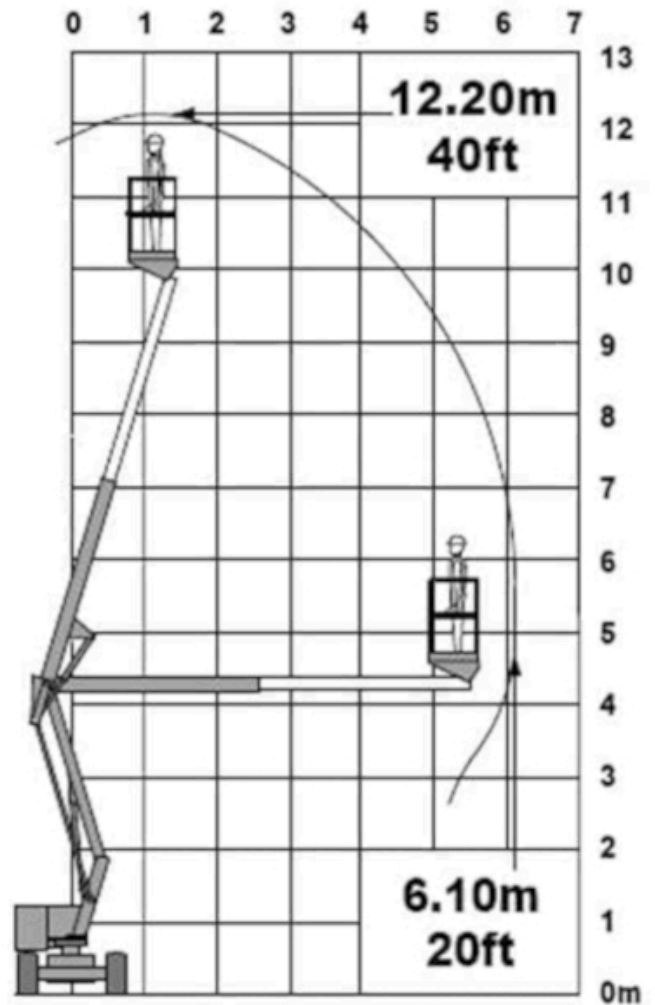


## GG 120-15 W

<b>Max. Working height</b>	12,10 m
<b>Movable up to working height</b>	12,10 m
<b>Max. Pitch angle</b>	25%
<b>Four-wheel drive</b>	no
<b>Drive type</b>	Batterie
<b>Non-Marking</b>	ja
<b>Construction width</b>	1,52 m
<b>Overall dimensions LxWxH</b>	4,08 x 1,52 x 1,95 m
<b>Ground clearance</b>	0,12 m
<b>Transport position height</b>	1,95 m
<b>Transport position length</b>	4,08 m
<b>Surplus</b>	0,0 m
<b>Dead weight</b>	3106 kg
<b>Track widening</b>	-
<b>Platform dimensions WxD</b>	0.90 x 0.60 m
<b>Max. Basket load / Lifting load</b>	200 kg
<b>Swing axle</b>	no
<b>Basket arm</b>	ja
<b>Swivel range</b>	+/-175°
<b>Rotating work basket</b>	no
<b>Max. lateral reach</b>	5,65 m
<b>Special features</b>	Light stage



NI

